

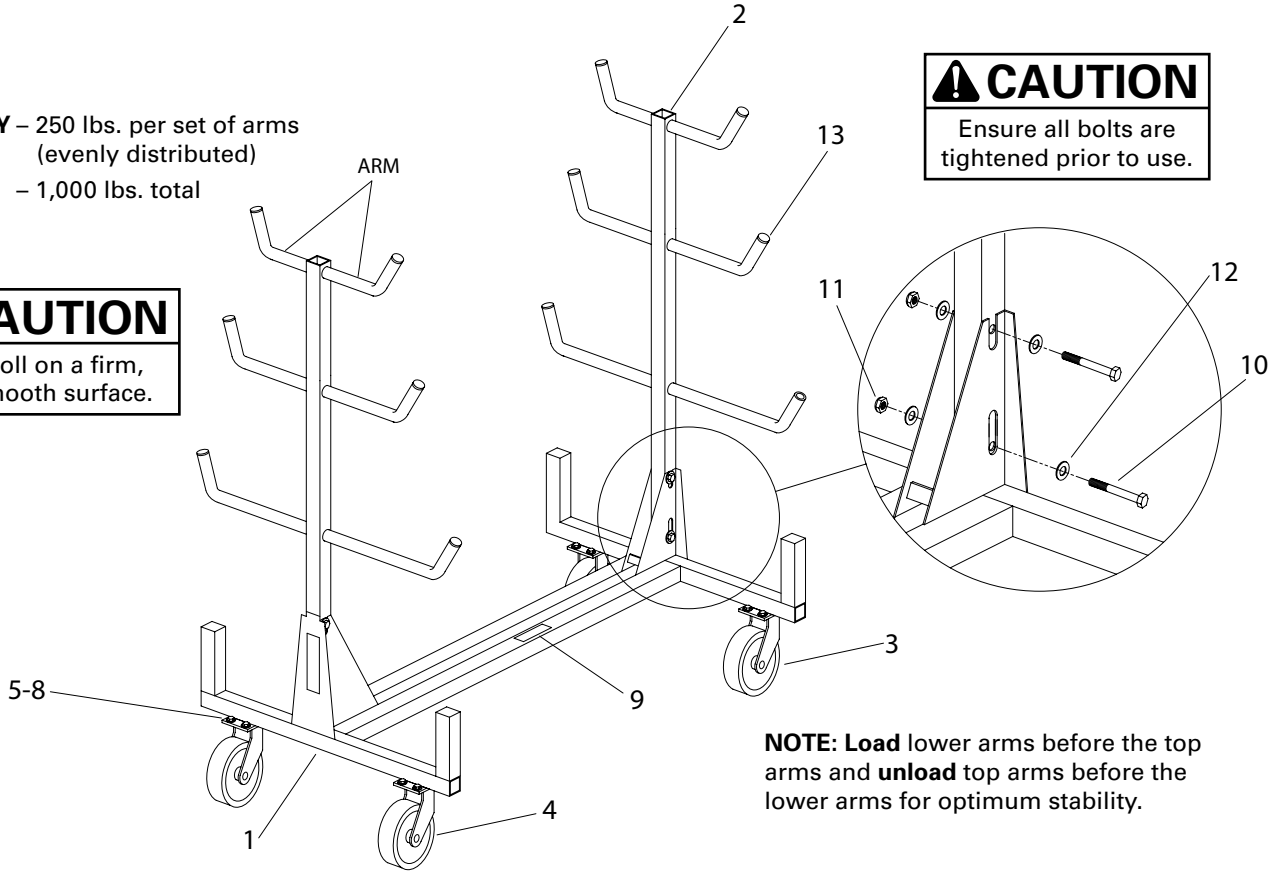
# JACKSON

## Model 5050 Conduit Rack

**CAPACITY** – 250 lbs. per set of arms  
(evenly distributed)  
– 1,000 lbs. total

**CAUTION**  
Ensure all bolts are  
tightened prior to use.

**CAUTION**  
Only roll on a firm,  
flat, smooth surface.



**NOTE:** Load lower arms before the top arms and **unload** top arms before the lower arms for optimum stability.

## INSTRUCTION SHEET AND PARTS LIST

### PARTS LIST — 5050 CONDUIT RACK

ITEM#	PART#	QTY	DESCRIPTION
1	505-245	1	BASE
2	505-246	2	UPRIGHT
3	506-2	2	CASTER, RIGID
4	506-1	2	CASTER, SWIVEL
5	5633WC-042	16	SCREW, HEX HEAD CAP 3/8-16 x 1-1/4"
6	5633WC-041	16	WASHER, FLAT
7	5633WC-040	16	NET, HEX, 3/8-16

ITEM#	PART#	QTY	DESCRIPTION
8	536-5	16	WASHER, LOCK
9	5050-1	1	DECAL
10	66-67	4	SCREW, HEX HEAD CAP 1/2-13 x 3 1/4"
11	5050-4	4	NUT, HEX 1/2-13 THIN NYLON INSERT
12	5050-2	8	WASHER, FLAT
13	505-18	12	PLUG, PLASTIC

02/2023

**CAUTION**  
Read and understand this material before operating the Conduit Rack. Failure to understand how to safely operate this Conduit Rack may result in injury or property damage.

This manual is free of charge. All personnel who operate the Conduit Rack should have a copy of this manual and read and understand its contents. To request a copy, call or write to the address below.

**JACKSON TOOL • P. O. BOX 5701 • GREENVILLE, SC 29606**  
877-522-8995 or 864-721-4235 • FAX 864-721-4236 • [www.jacksonstoolinc.com](http://www.jacksonstoolinc.com)



## ASSEMBLING CONDUIT RACK FROM THE STORAGE POSITION

1. Ensure that all 4 bolts (Item #10), 8 washers (Item # 12) and 4 nuts (Item # 11) are installed on the uprights.
2. Loosen the bolt at the base of both uprights and pivot the uprights upward. (See Assembly Figure 1).

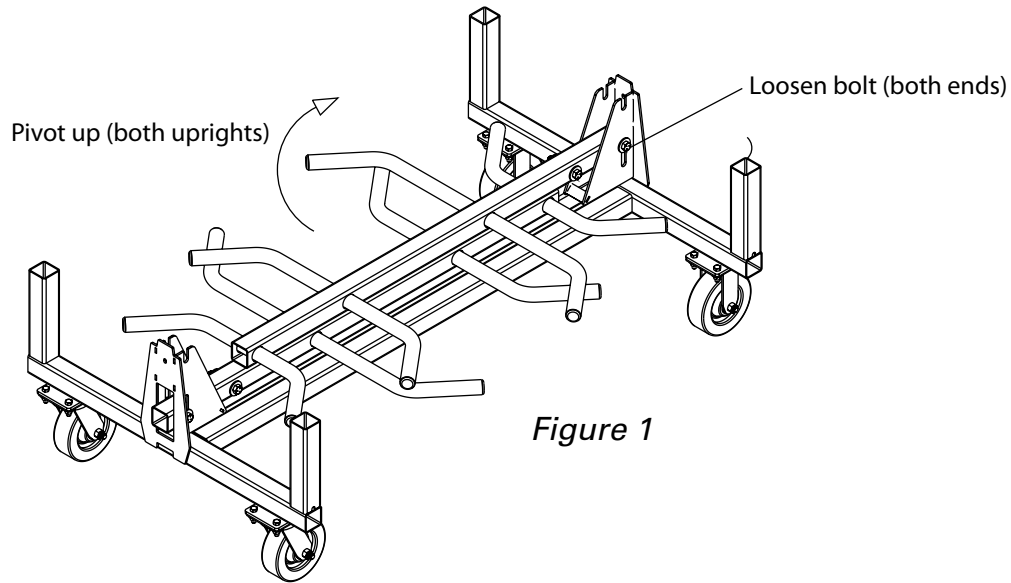


Figure 1

3. Lift the uprights high enough to insert the upper bolt into the slot at the top of the upright supports, making sure the washers are on the outside of the support.
4. Ensure the top bolt is fully seated in the upright support slot and completely tighten all 4 bolts prior to use (See Assembly Figure 2).

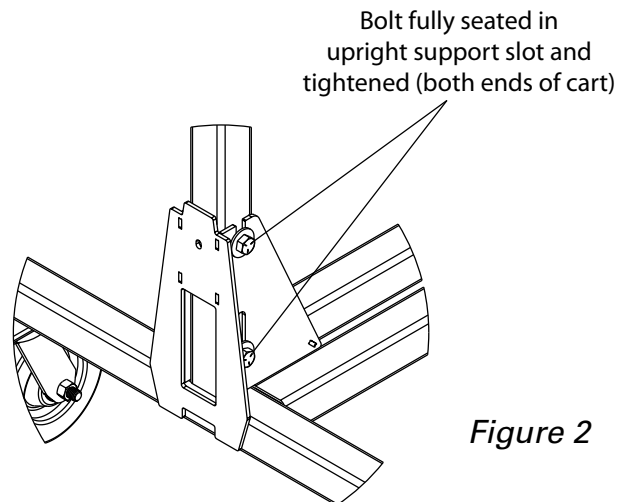


Figure 2



## DIS-ASSEMBLING CONDUIT RACK TO THE STORAGE POSITION

1. Loosen all 4 nuts on the uprights, making sure the nylon insert on the nuts remain engaged with the threads on the bolts (this will ensure that the nuts remain on the bolts and do not fall off and get lost)
2. Lift the upright high enough to clear the slot at the top of the upright support and fold inward (See Dis-Assembly Figure 3).

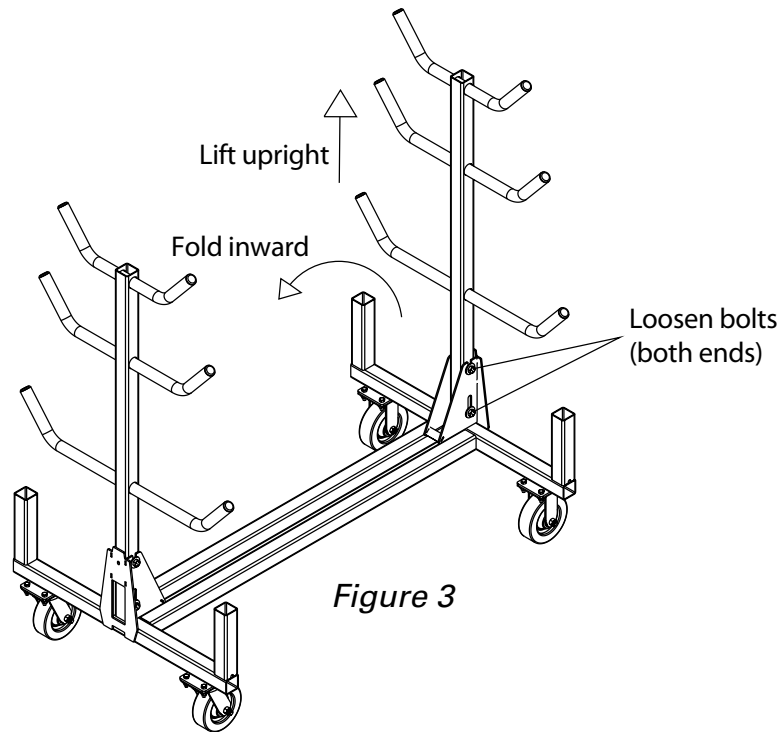


Figure 3

3. Tighten the 2 lower bolts that are captured in the upright support to prevent the folded uprights from bouncing or otherwise moving during transport. (See Dis-Assembly Figure 4).

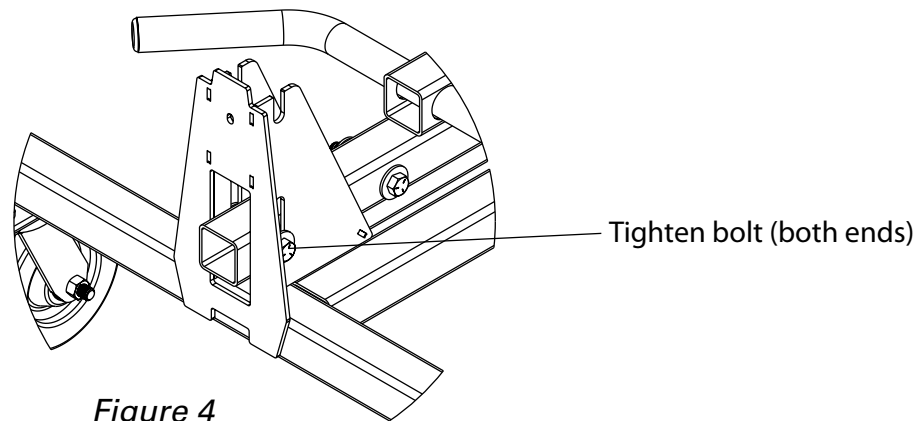
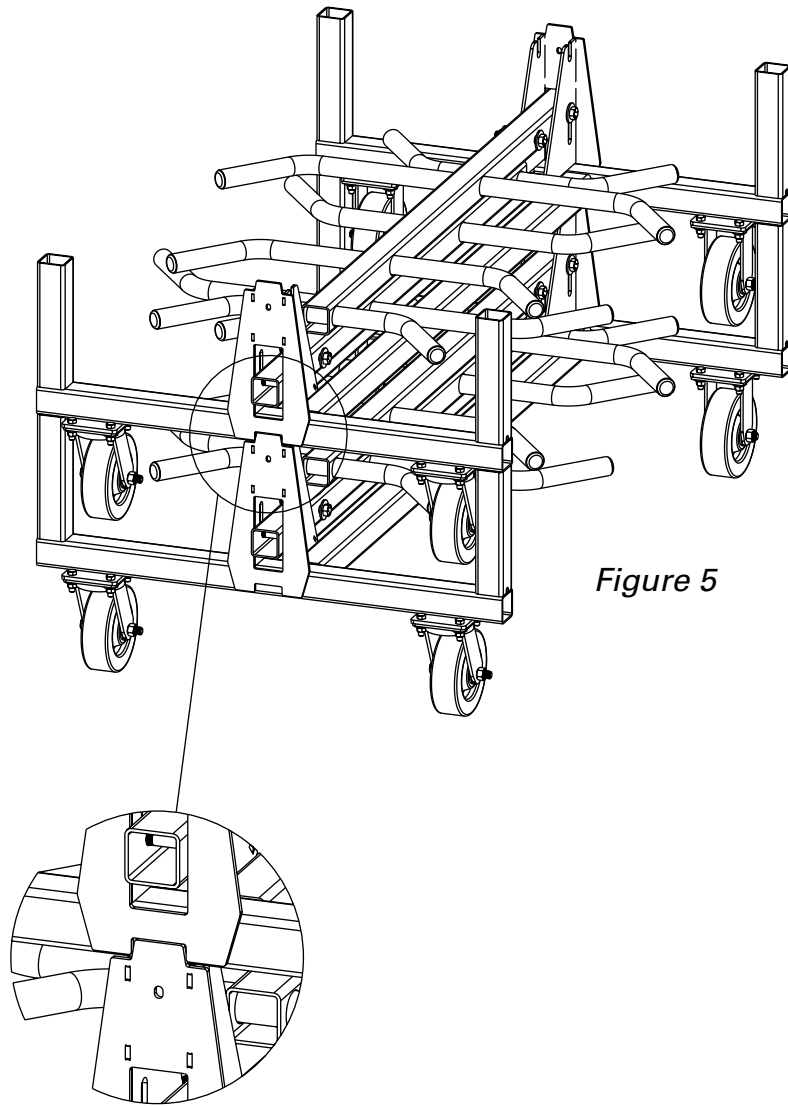


Figure 4

## STACKING RACKS FOR STORAGE

1. Ensure both uprights are completely folded inward and the 2 lower bolts are tight as described in step 3 of the dis-assembly instructions above.
2. Lift rack and position on top of the second rack, ensuring the top rack fully seats in the notches of the lower rack as shown (See Stacking Figure 5).



*Figure 5*