

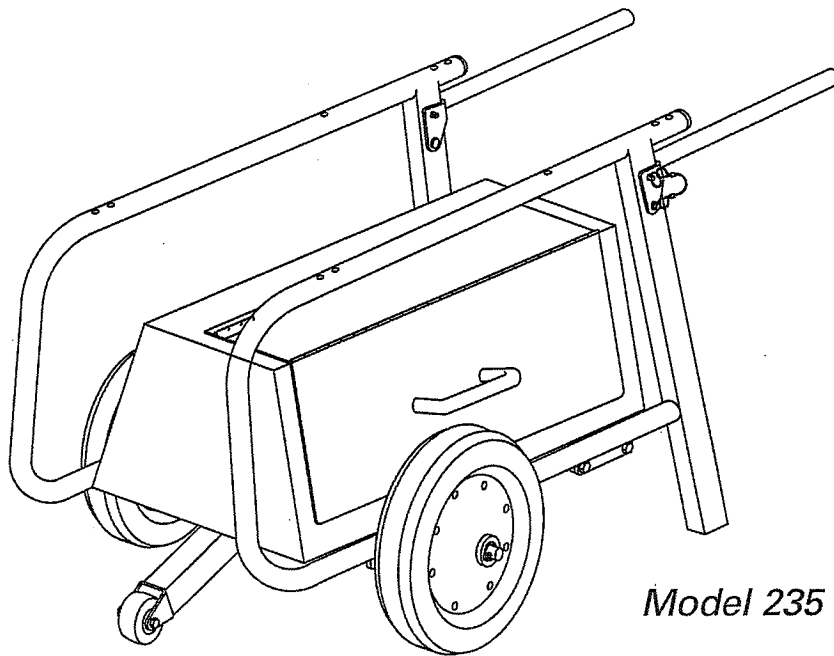
JACKSON

Jackson Tool Threader Stands

Model 224 – Rolling Stand with tray

Model 235 – Rolling Stand with storage box

Model 246 – Adapter Set



Model 235 shown

Assembly, Safety and Operating Manual

12/10 - REV. 0



Read and understand this material before using the Threader Stand. Failure to understand how to safely assemble and use this unit may result in serious injury or death.

This manual is free of charge. All personnel who assemble or operate this equipment should have a copy of this manual and read and understand its contents. To request a copy, call or write to the address below.

**JACKSON TOOL, INC. • P. O. BOX 5701 • GREENVILLE, SC 29606
877.522.8995 OR 864.244.2544 • FAX 864.244.2128 • www.jacksonstoolinc.com**

TABLE OF CONTENTS

<i>Safety Alerts</i>	2
<i>Safety Information</i>	3
<i>Model Descriptions</i>	3
<i>Maintenance</i>	3
<i>Assembly Instructions</i>	4
<i>Threader Mounting Positions</i>	5
<i>Model 246 Adapter Set - Assembly</i>	5
<i>Exploded View</i>	6
<i>Parts List</i>	7

SAFETY ALERTS



Safety Alert Symbol

THIS SAFETY SYMBOL is used to call your attention to instructions that concern your personal safety. It means: ATTENTION! BE AWARE! THIS IS AN IMPORTANT SAFETY INSTRUCTION!

Read, understand and follow these safety instructions. Failure to follow these safety instructions may result in injury or death.

DANGER

Immediate hazards which, if not avoided, WILL result in serious personal injury or death.

WARNING

Hazards or unsafe practices which, if not avoided, COULD result in serious personal injury or death.

CAUTION

Hazards or unsafe practices which, if not avoided, COULD result in minor personal injury or property damage.

RETAIN SAFETY INFORMATION



This manual should be read and understood by all personnel who use the Threader Stand. Failure to understand how to safely assemble and use this unit could result in injury or death. This unit should only be operated by qualified personnel.

IMPORTANT SAFETY INFORMATION

Follow ALL safety information provided by the manufacturer.

▲ WARNING ALWAYS roll the threader stand on a smooth, level, firm surface. Tipping of the threader stand may occur if rolled over unlevel surfaces.

▲ WARNING ALWAYS operate the threader stand on a level surface.

▲ WARNING Threaders MUST be mounted to a stable, properly assembled stand before operating or transporting. Follow all assembly instructions provided.

▲ WARNING Threader MUST be properly balanced on the stand. ALWAYS check to ensure the threader you mount to the stand is mounted to the correct holes in the stand. See page 5 for threader mounting positions.

MODEL DESCRIPTIONS

JACKSON Model No.	Description	Will fit RIDGID®* Model #
224	Rolling Stand with tray	535 – Before 2001
224W	Rolling Stand with tray	535 – 2001 and later 1224
235	Rolling Stand with storage box	535 – Before 2001
235W	Rolling Stand with storage box	535 – 2001 and later 1224
246	Adapter Set for 224 or 235 threader stand	535 (pre-1996)

*RIDGID® is a registered trademark of Ridge Tool Company.

MAINTENANCE

Grease the wheel bearings with a good gauge of M.P. grease as needed.

ASSEMBLY INSTRUCTIONS

ASSEMBLY DRAWING

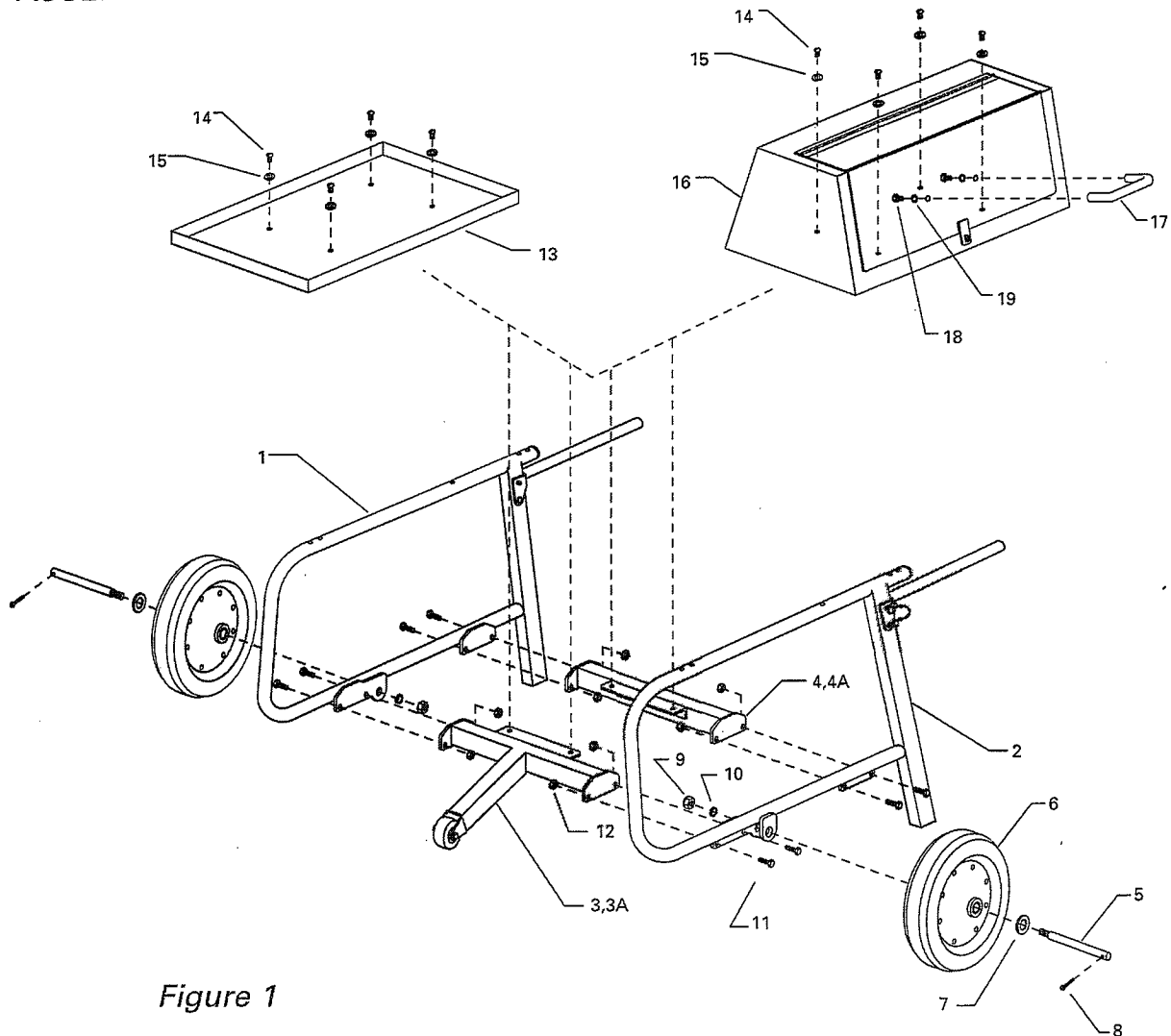


Figure 1

1. Attach front and rear crossmembers (3/3A, 4/4A) to side frames (1,2) with $3/8"$ -16 x 1" hex head cap screws and $3/8"$ -16 hex nuts (11,12) as shown in Figure 1. Be sure crossmembers are assembled as shown in Figure 1.
2. Install 2 - axles (5) and secure with $1/2"$ -13 hex nuts and $1/2"$ lock washers (9, 10). Place wheels onto axles, place 1 washer (7) on each axle (5) and secure with cotter pins (8).
3. Depending on the unit you have ordered, mount either the tray (13) or the storage box (16) with the $1/4"$ -20 x $1/2"$ slotted round head machine screws and $1/4"$ flat washers (14, 15). Attach the handle of the storage box (17) with M8 x 12 hex head screws and M8 lock washers (18, 19).

THREADER MOUNTING POSITIONS

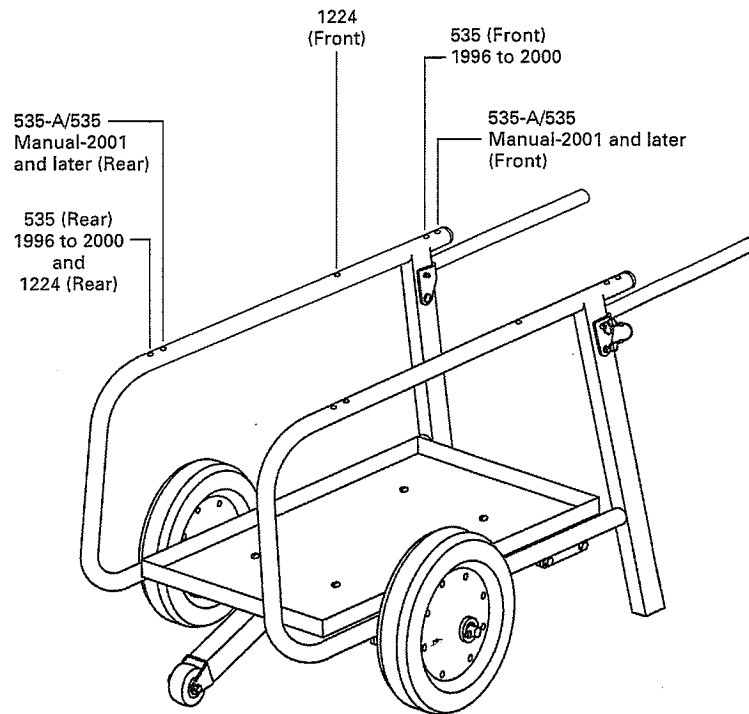


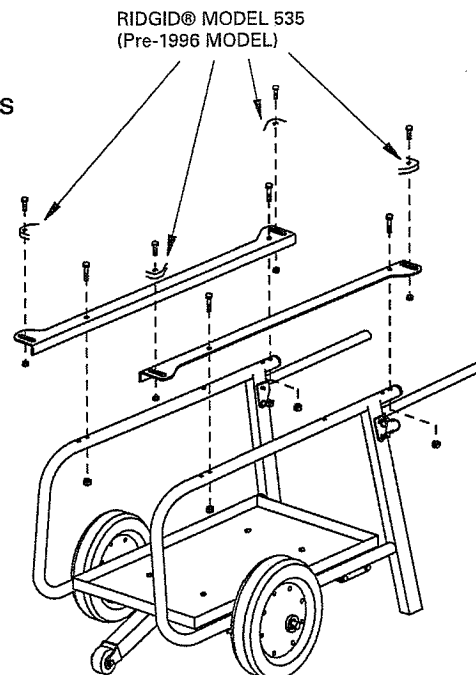
Figure 2

Note: Front of 535/1224 is oil reservoir end of unit.

MODEL 246 ADAPTER SET - ASSEMBLY

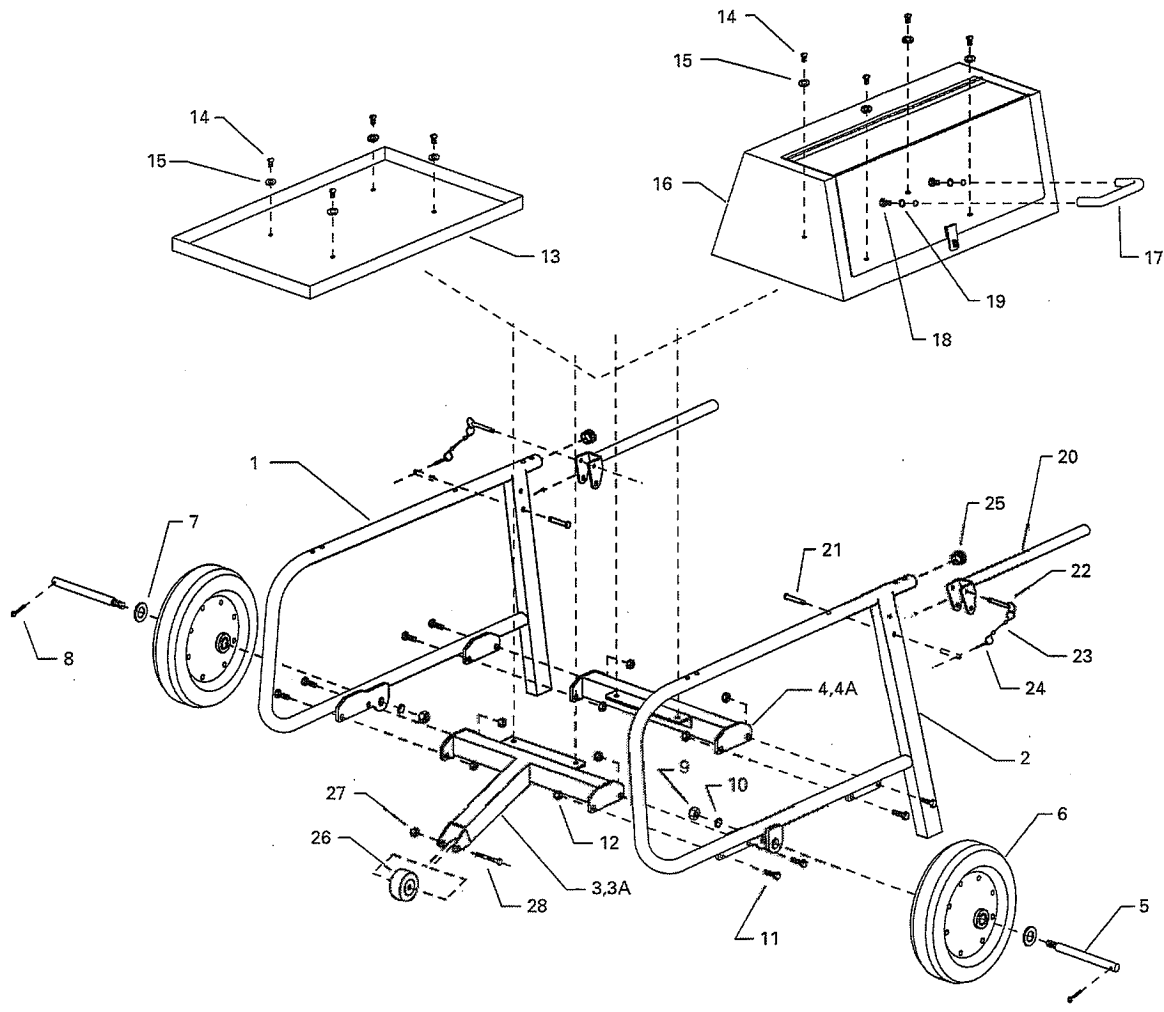
Note: To attach a pre-1996 model 535 to a model 224 or 235 threader stand, a 246 adapter set must be used.

1. Mount 246 Adapter Set with hardware provided (4) $\frac{3}{8}$ " - 16 x 2" Hex Head screws and (4) $\frac{3}{8}$ " - 16 thin Hex Nuts (Nylon insert) as shown in Figure 3.
2. Next, attach RIDGID®* 535 Threader (Pre-1996) to the Jackson Tool Model 246 Adapter Set by bolting through slots as shown. (Hardware provided by end user)



* RIDGID® is a registered trademark of Ridge Tool Company.

EXPLODED VIEW - THREADER STANDS



PARTS LIST

ITEM #	PART #	QTY	DESCRIPTION
1	224-29	1	SIDE FRAME (RH)
2	224-30	1	SIDE FRAME (LH)
3	224-3	1	REAR CROSSMEMBER
3A	224-3A	1	CROSSMEMBER, REAR-WIDE
4	224-4	1	FRONT CROSSMEMBER
4A	224-4A	1	CROSSMEMBER, FRONT-WIDE
5	224-5	2	AXLE
6	224-6	2	WHEEL - 15"
7	224-017	2	WASHER, 3/4 FLAT SAE
8	224-8	2	COTTER PIN, 3/16 x 1 1/4
9	224-2G	2	1/2 - 13 HEX NUT
10	224-2C	2	1/2" LOCK WASHER
11	224-11	8	3/8 - 16 x 1" HEX HEAD CAP SCREW
12	2508-8	8	3/8 - 16 HEX NUT (NYLON INSERT)
13	224-13	1	TRAY
14	224-14	4	SCREW - HX HD CAP, 1/4" - 20 x 1/2"
15	224-14I	4	1/4" FLAT WASHER
16	224-16	1	STORAGE BOX
17	224-11	1	HANDLE, STORAGE BOX
18	235-18	2	M8 x 12 HEX HD SCREW
19	235-19	2	M8 LOCK WASHER
20	224-20	2	HANDLE
21	224-21	2	PIN - CLEVIS, 3/8" x 2 1/8"
22	224-22	2	QUICK RELEASE PIN
23	224-23	2	LANYARD ASSY
24	224-23	2	COTTER PIN, 1/8" x 1"
25	224-25	2	CAP PLUG
26	224-26	1	ROLLER - 2 1/2"
27	224-12	1	5/16 - 18 x 2 1/4 SOC HEAD CAP SCREW
28	224-28	1	5/16 HEX NUT (NYLON INSERT)